



LA GARD Locks BV
Vlijtstraat 40
NL-7005 BN Doetinchem
The Netherlands

Tel: +31 314 376 876

Fax: +31 314 376 878

Internet: <http://www.lagard.nl>

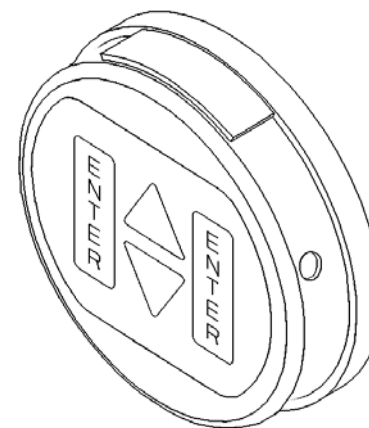
E-mail: info@lagard.nl

LGView 3.30

LGView 3x

PC software to view Audit files

39E Multicode
66E Software versions

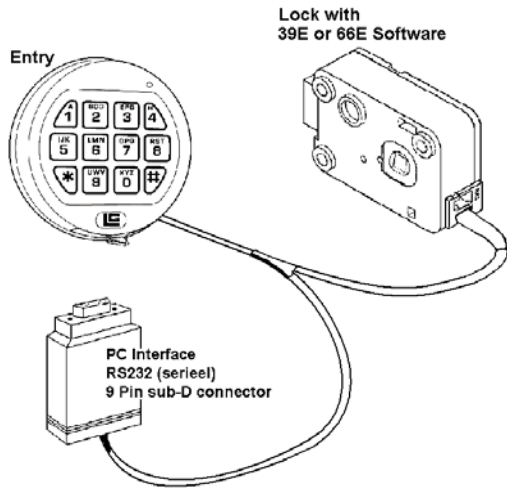


Introduction

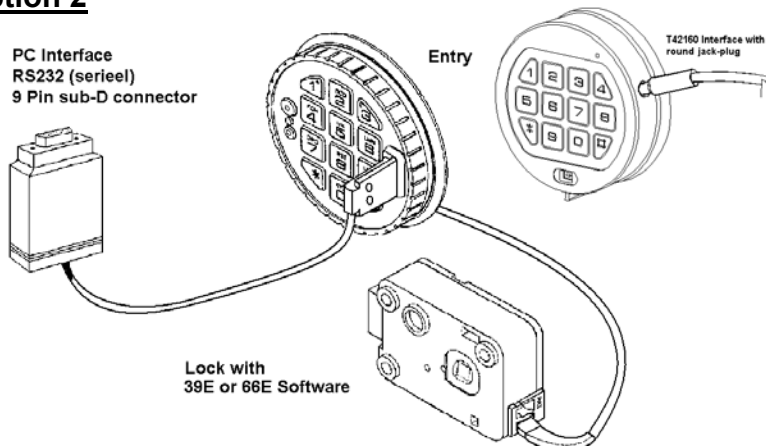
LA GARD 39E and 66E series electronic combination locks are recording events into an audit file. With this program and the Audit Interface Cable you are able to download this audit file and display it to the screen. You are able to filter the events in order to analyze them. You also can save the audit file, load it back and send your analysis results to printer. This software requires a computer running Windows 95 or higher and at least 4MB free on hard disk. You need a free COM port to connect the Audit Interface Cable.

There are two options to connect the interface to the lock:

Option 1

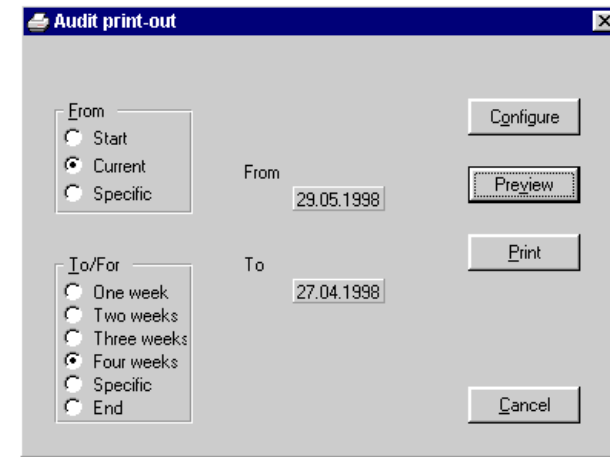


Option 2



Print events

When you completed the filtering of events at your convenience, you can print the result. Depending on filter(s), you can choose dates range in following window:



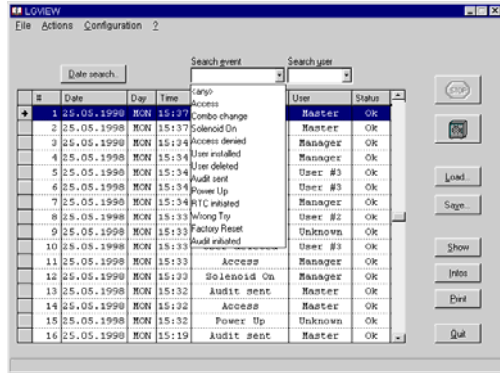
LaGard audit viewer
Ver. 1.20

Lock info		Acquisition Date/Time	
SN# 02000002	Ver. 1.00	29.05.1998	18:22

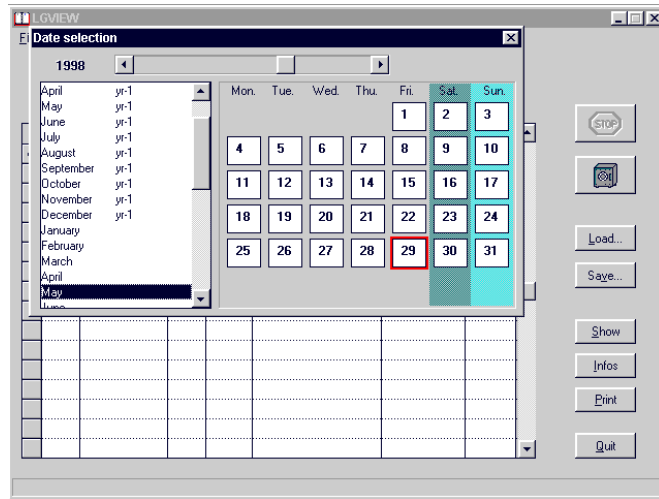
Lock configuration				Users	
Delay	1 min.	Key	-	Dual	-
Window	2 min.	Audt	x	Override	x
		RTC	x	Duress	-
				Length	8
				Status	AAAA---A

#	Date	Day	Time	Event	User	Status
1	29.05.1998	FRI	18:22	Audit sent	Manager	OK
2	29.05.1998	FRI	18:22	Access	Manager	OK
3	29.05.1998	FRI	18:16	Solomid On	Manager	OK
12	29.05.1998	FRI	18:13	Solomid On	Manager	OK
13	29.05.1998	FRI	18:12	Delay started	Manager	OK
23	29.05.1998	FRI	18:09	Delay change	Manager	OK
24	29.05.1998	FRI	18:09	Access	Manager	OK
26	29.05.1998	FRI	18:07	Solomid On	Manager	OK
29	29.05.1998	FRI	18:07	Access	Manager	OK
30	29.05.1998	FRI	18:06	User checked	Manager	OK
31	29.05.1998	FRI	18:06	Access	Manager	OK
32	29.05.1998	FRI	18:06	Access	Manager	OK
33	29.05.1998	FRI	18:06	Access	Manager	OK
38	29.05.1998	FRI	18:05	Solomid On	Manager	OK
39	29.05.1998	FRI	18:05	User installed	Manager	OK

Using Search event and Search user fields, you can search the first row containing selected event or user.

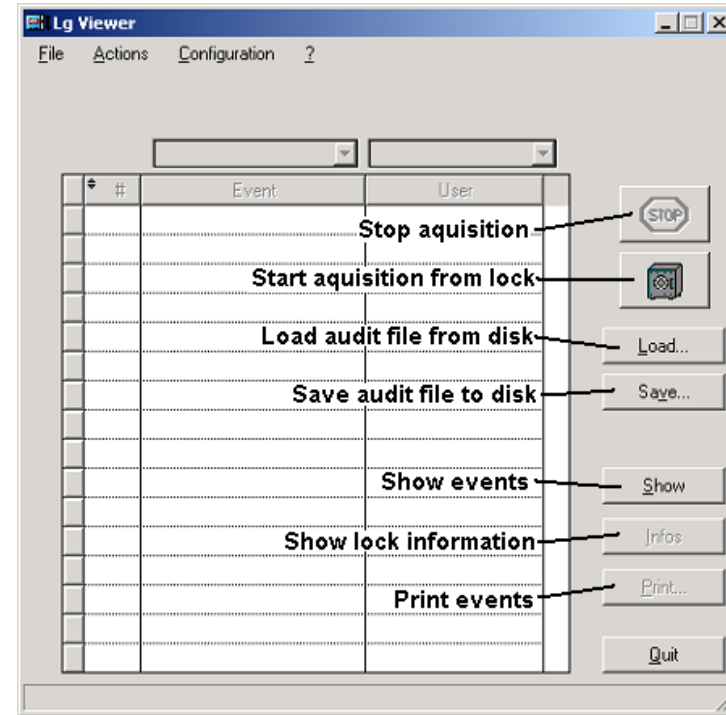


By clicking on **Date search** a calendar opens. Choose any date and the Main Screen displays only events from that date.

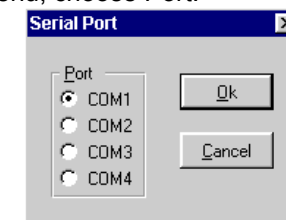


Installation 39E

1. Start Windows® and insert the software CD-rom.
2. Click on Start on the Task bar and select the CD-rom drive.
3. From the dialog box, select "LGView3x V0104". Click OK.
4. Select "INSTALL.EXE". Click OK.
5. Follow the on-line instructions.
6. At the end of the installation, a shortcut is created.
7. Click on Start on the Task bar and select Programs.
8. Click on LaGard and choose LGView3x program.



9. You must now define the serial port to use in order to download audit files from lock. Note that you need the Audit Interface Cable to connect COM port of your PC to the lock (keypad TAG reader). Go to Configuration menu, choose Port.



Download audit file from lock

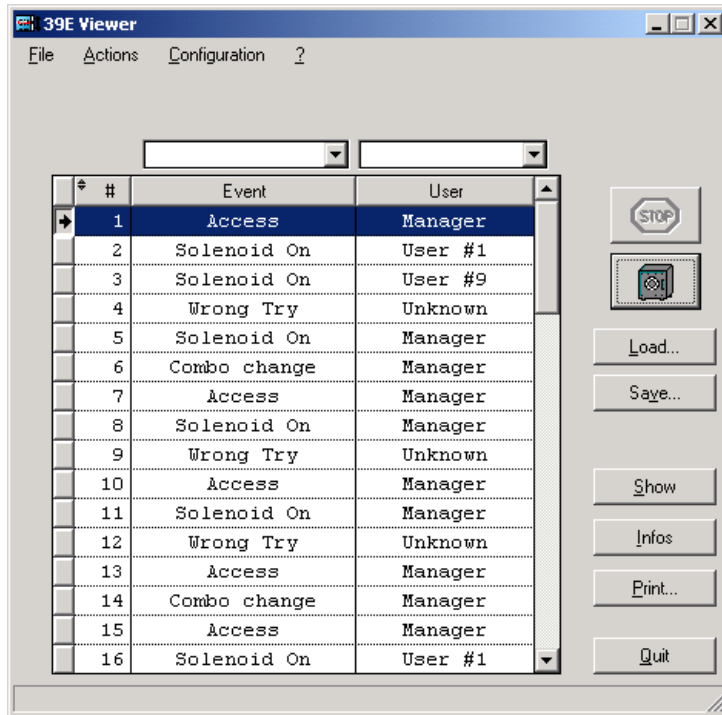
1. Connect the Audit Interface Cable to the PC and to the Tag Reader or 4-Pol connector of the Lock Entry. See page 2.
2. Choose Start acquisition from the Actions-Menu or click on safe icon.
3. On the status bar (window bottom), a line counter is displayed. Each received line increases this counter.
4. You can stop acquisition anytime by clicking on STOP.
5. When acquisition ends you see the events on the Main Screen.
6. Click on **Infos** to see Lock Status.
7. Click on **Save** to save the audit file to the hard drive of your PC.

Open audit file

Click on **Load** button and choose an audit file.

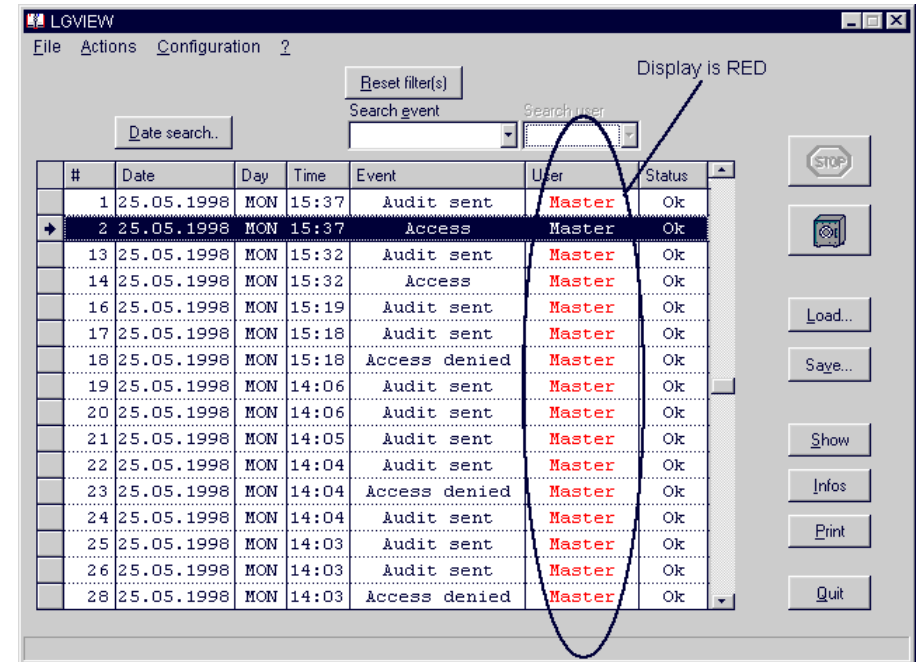
The audit file extension is LOG.

The Main Screen shows now the events that are stored in the file.



If the file does not contain events, a smaller window gives you information on acquisition date and time, and also the lock configuration and status.

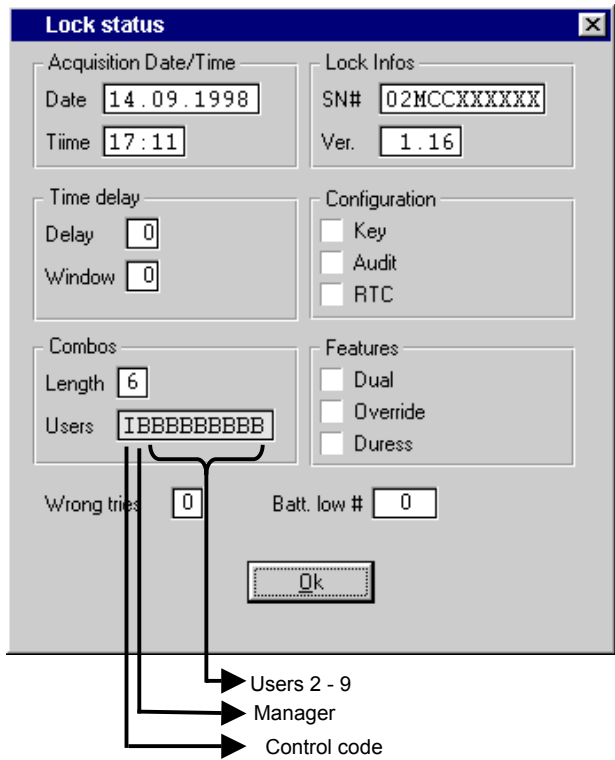
The columns in the Main Screen can be used to filter events. Select a row that contains your filter criteria (i.e. Master), and then right click on the field that contains the criteria. The Column switches to red color, indicating active filter. Now, only events with the filter criteria are displayed.



You can add filter, using same method with columns Date, Day, Event and User.

To reset filter, right click again on selected column. To reset all filters, click on Reset filter(s).

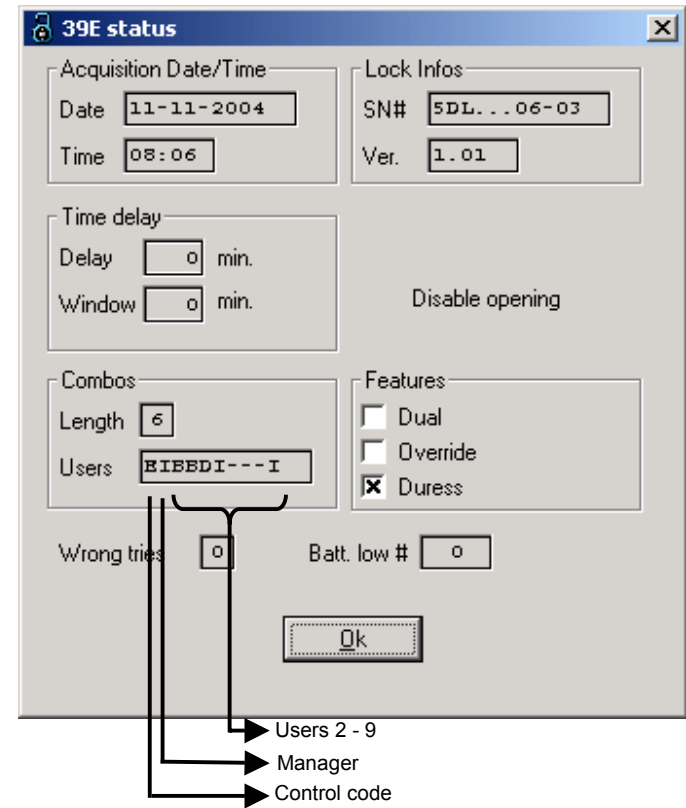
Note that this window (below) can be displayed also by clicking on **Infos**.



Users status

E	User active
D	User disabled
-	User does not exist
B	Blocked, user cannot be activated by manager
I	Manager/Control code initialized (Change code to activate features)

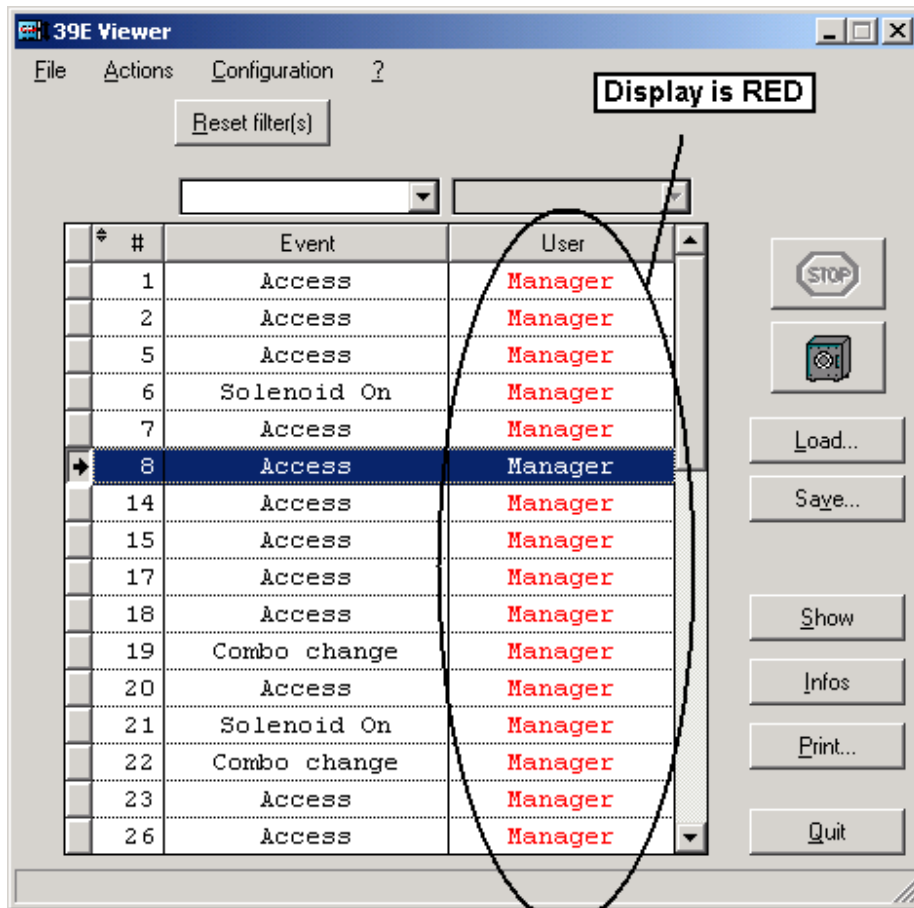
Note that this window (below) can be displayed also by clicking on **Infos**.



Users status

E	User active
D	User disabled
-	User does not exist
B	Blocked, user cannot be activated by manager
I	Manager/Control code initialized (Change code to activate features)

The columns in the Main Screen can be used to filter events. Select a row that contains your filter criteria (i.e. Manager), and then right click on the field that contains the criteria. The Column switches to red color, indicating active filter. Now, only events with the filter criteria are displayed.



You can add filter, using same method with columns Event and User. To reset filter, right click again on selected column. To reset all filters, click on Reset filter(s).

Download audit file from lock

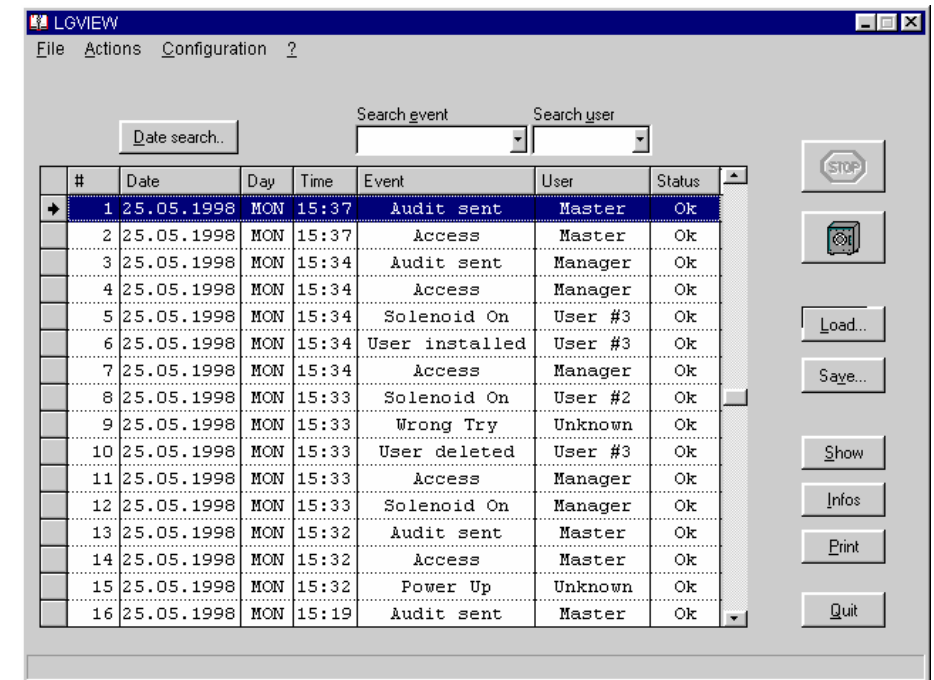
1. Connect the Audit Interface Cable to the PC and to the Tag Reader or 4-Pol connector of the Lock Entry. See page 2.
2. Choose Start acquisition from the Actions-Menu or click on safe icon.
3. On the status bar (window bottom), a line counter is displayed. Each received line increases this counter.
4. You can stop acquisition anytime by clicking on STOP.
5. When acquisition ends you see the events on the Main Screen.
6. Click on **Infos** to see Lock Status.
7. Click on **Save** to save the audit file to the hard drive of your PC.

Open audit file

Click on **Load** button and choose an audit file. There are Demo-Files in the LaGard folder.

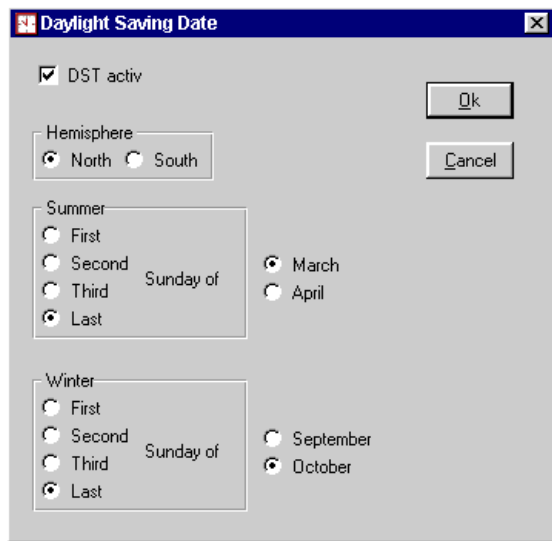
The audit file extension is LOG.

The Main Screen shows now the events that are stored in the file.



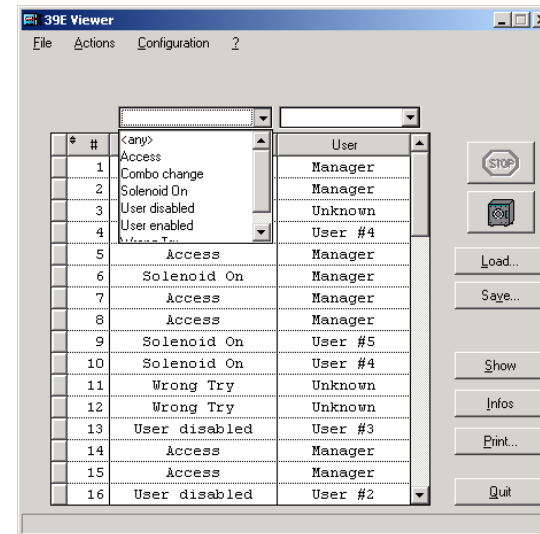
If the file does not contain events, a smaller window gives you information on acquisition date and time, and also the lock configuration and status.

9. Now, you define the Daylight Saving Time settings. Go to Configuration menu, choose Daylight Saving Time.



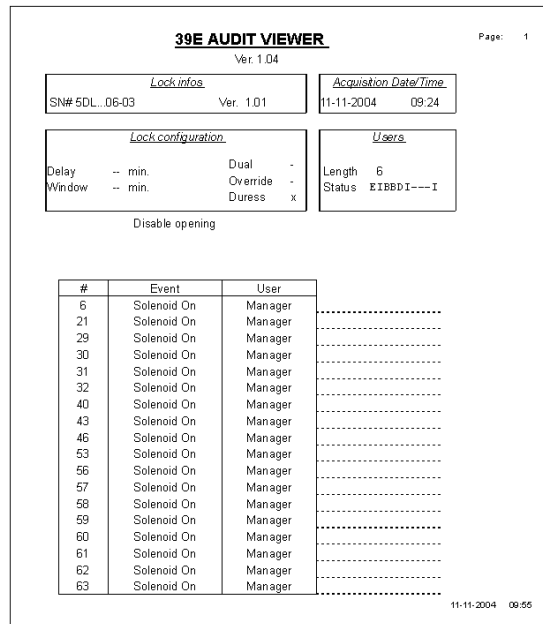
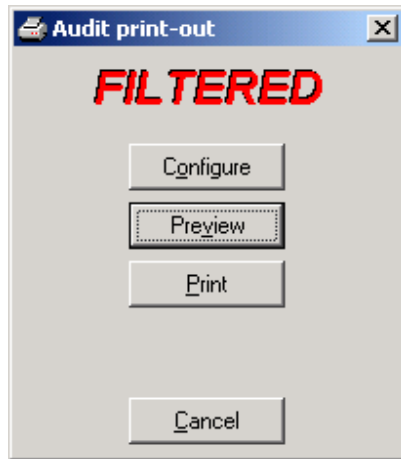
DST must be active to let LGView correct date and time when downloading from lock.

Using Search event and Search user fields, you can search the first row containing selected event or user.



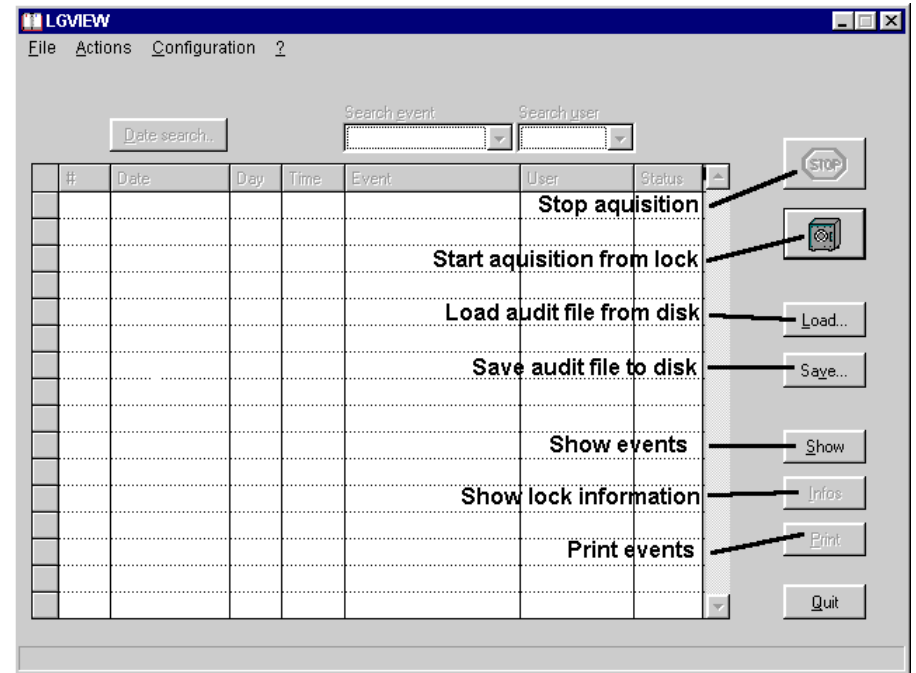
Print events

When you completed the filtering of events at your convenience, you can print the result.



Installation 66E

1. Start Windows[®] and insert the software CD-rom.
2. Click on Start on the Task bar and select the CD-rom drive.
3. From the dialog box, select "LGView V0330.exe". Click OK.
4. Follow the on-line instructions.
5. At the end of the installation, a shortcut is created.
6. Click on Start on the Task bar and select Programs.
7. Click on LaGard and choose LGView program.



8. You must now define the serial port to use in order to download audit files from lock. Note that you need the Audit Interface Cable to connect COM port of your PC to the lock (keypad TAG reader). Go to Configuration menu, choose Port.

